



0606

The 0606 LED work light is small in size but packs plenty of power. It can be used in confined spaces and is suitable for forklift trucks, floor scrubbers, sweepers, and other small machinery. The 0606 can even be mounted on truck mirrors due to its small size.

It has undergone rigorous vibration testing and meets EMC class 4 & 5 according to EN55025 / CISPR25 standards.



TECHNICAL DATA

- Housing Material:** Cast Aluminium
- Mounting Options:** Hanging
Standing
Side
- Lens Material:** Polycarbonate
- Temperature range:** -40 to +75 °C
- Connector:** Deutsch (DT04-2P) built in.
Mating part: DT06-2S
- Weight:** 280 g / 0,62 lb
- Light Patterns:** Wide Symmetric
Spot

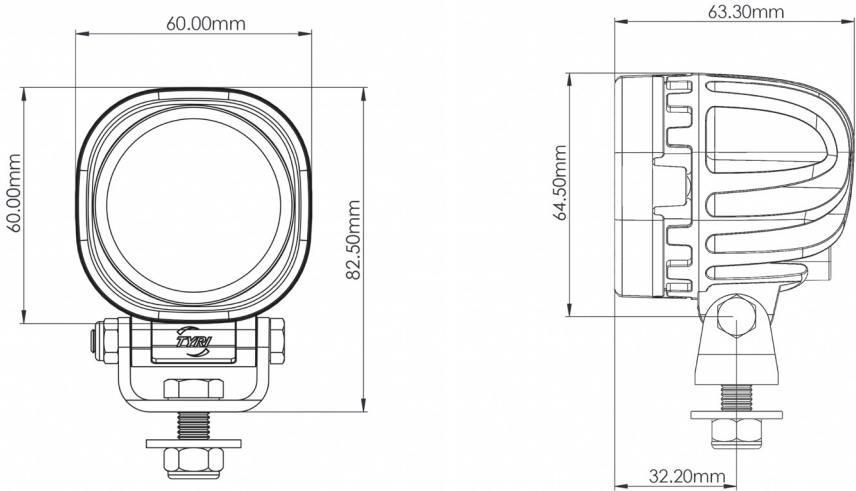
FEATURES

- Overheating Protection
- Over-voltage Protection
- Polarity Protection
- UL Optional

TEST STANDARDS

- Salt Spray ASTM B117 500 h
- Vibration 5-2000 Hz 3 Axis, 8 Grms
- Shock Tested 50 G 11 ms
- IP69K
- EN55025 / CISPR 25 Class 4 & 5, ISO7637-2, ISO10605, ISO16750-2, ISO11452-2
- R10

For further information visit www.tyrilights.com or contact your local sales team.



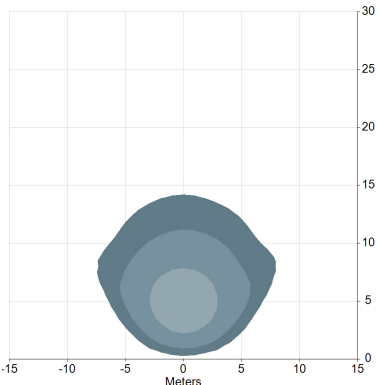


0606

LIGHT OUTPUT	VOLTAGE		AMP DRAW		POWER	COLOR TEMP	LENS PATTERN	PART NO.	EMC	ECE
Effective Lumen	Machine	Operating	12 V	24 V	Watts	K			EN55025 / CISPR25	ECE Rating
700 eLm	12-48 V	9-60 V	1,2 A	0,6 A	13 W	5,700 K	Wide Symmetric	BLU-102-1	4	R10
1,000 eLm	12 V	9-16 V	1,1 A	- A	13 W	5,700 K	Wide Symmetric	BLU-112-1	5	R10
1,000 eLm	24 V	18-32 V	- A	0,6 A	13 W	5,700 K	Wide Symmetric	BLU-114-1	5	R10

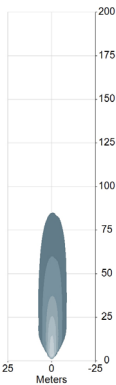
TYPICAL LIGHT PATTERNS

Example for 0606 / 1,000 effective lumen.



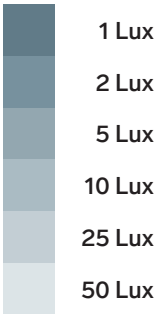
0606 / 1,000 eLm

Wide, 45° +
3.0 m / -15°
Symmetric



0606 / 1,000 eLm

Spot
1.0 m / 0°
Symmetric



LED work lights are exposed to dirt, fertilizers, road salt, acids and more. For best performance and long lifetime, the lens and the cooling fins must be cleaned on a regular basis.